

## Facility Needs Assessment Tool Instructions

October 2014

### The Tool

The WASH & CLEAN Facility Needs Assessment Tool contains questions on a number of areas regarding the health facility and maternity unit related to infection prevention and control (IPC) and water, sanitation and hygiene (WASH). The data collected by the tool provides basic information to better understand the facility context and to provide guidance for improving IPC protocols, resources and practices by identifying WASH & IPC weaknesses and gaps.

### Application of the Tool

As part of an audit cycle, the tool should be applied by the Senior Nurse or Midwife (or equivalent) of the maternity unit with the assistance of a member of the IPC Committee (if applicable).

As part of a wider research study, the tool should be applied by the data collector who should go through each question in an interview format with the Senior Nurse or Midwife (or equivalent) of the maternity unit.

### Instructions

It should be stated to the Senior Nurse or Midwife (or equivalent) that the Facility Needs Assessment Tool is not a test, nor is it intended to find fault. Respondents will be requested to answer a series of simple questions requiring yes/no, multiple choice, checklist and brief written responses.

Each question should be read carefully.

Each answer should be marked with an 'X' unless otherwise indicated.

If a question relates to a practice not conducted within the health facility, enter 'NA' in the adjacent answer box; do not leave the box blank. This ensures the question was not omitted in error.

Note that some questions require the respondent to **'Mark one answer'** or **'Mark all that apply'**. Ensure these questions are completed correctly.

### Data Analysis

Summary tables and graphs should be generated for each of the eleven sections of the Facility Needs Assessment Tool. Tables and graphs can be generated using software such as EXCEL or SPSS.

Analysis can be grouped according to the components of the Conceptual Framework.

See below for examples of summary tables and graphs and where they fit in to the WASH & CLEAN Conceptual Framework. An example of triangulation between data sources is also provided. The examples are provided for multiple facilities. Appropriate data can be extracted and combined in tables for individual facilities.

*The tables and graphs shown are for illustrative purposes and contain artificial data only.*

**Table 1: Labour and Delivery Information from the last 12 Months**

Facility No.	Facility Type	Weekly average no. of normal deliveries	Weekly average no. of C-section deliveries	Weekly average no. of total deliveries per week	No. of beds in the delivery area at time of survey	How often no. of women exceeds no. of delivery beds
1	Public CEmOC	3	6	9	21	never
2	Public BEmOC	10	NA	10	4	sometimes
3	Non-public CEmOC	8	0	8	5	sometimes
4	Public CEmOC	16	12	28	6	sometimes
5	Public CEmOC	12	2	14	13	never
6	Non-public CEmOC	5	0	5	4	rarely

**Table 2: Infection Prevention and Control Training (Conceptual Framework - Healthcare Organisation)**

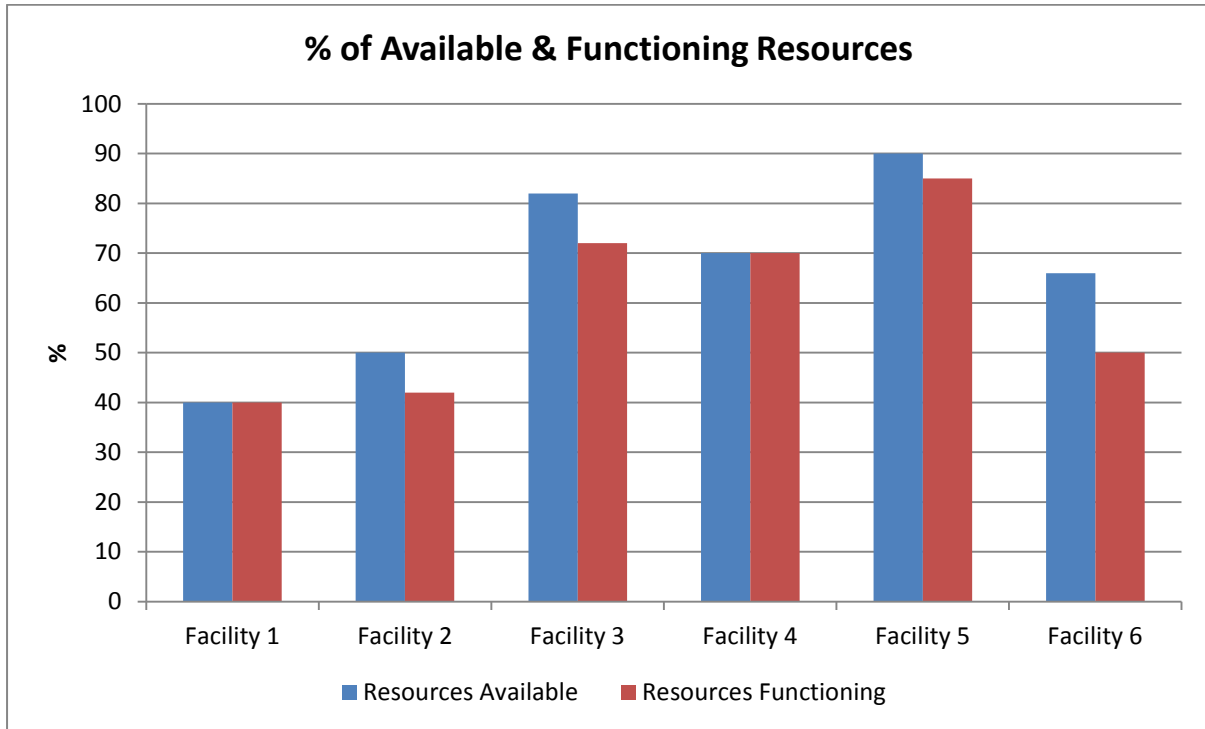
Facility Number	Facility Type	Overall SOH-D Score*	Orientation programme with information on IPC for new healthcare providers?	Training programme in IPC for all healthcare providers?	Training programme in IPC for non-clinical staff e.g. cleaners?	Any training in IPC conducted in the last year?
1	Public CEmOC	40	No	No	No	No
2	Public BEmOC	64	No	No	No	Yes
3	Non-public CEmOC	72	No	Yes	Yes	Yes
4	Public CEmOC	50	Yes	No	No	No
5	Public CEmOC	66	No	Yes	No	Yes
6	Non-public CEmOC	74	No	Yes	No	Yes

\*See the Walkthrough Checklist for the SOH-D Score – this column is an example of triangulation between the tools

**Table 3: Summary Table of Document Availability (Conceptual Framework - Healthcare Organisation)**

Facility Number	Document available & shown to data collector (%)	Document exists but is unavailable (%)	Document does not exist (%)	Total (%)
1	5 (33)	4 (27)	6 (40)	15 (100)
2	3 (20)	8 (53)	4 (27)	15 (100)
3	9 (60)	0 (0)	6 (40)	15 (100)
4	4 (27)	5 (33)	6 (40)	15 (100)
5	8 (53)	2 (13)	5 (33)	15 (100)
6	3 (20)	2 (13)	10 (67)	15 (100)

**Figure 1: Percentage of Available and Functioning Resources (Conceptual Framework - Healthcare Environment)**



**Figure 2: Distribution of scores on determinants of hygiene by facility type (Conceptual Framework - Healthcare Environment)**

