

SYNOPSIS FROM SITUATIONAL ANALYSIS OF SAFE WATER SUPPLY, SANITATION  
INFRASTRUCTURE, HAND-WASHING FACILITIES AND HYGIENIC PRACTICES IN HEALTH  
CARE FACILITIES WITHIN 7 UNICEF PROGRAM DISTRICTS IN TANZANIA

HAMISI M. MALEBO, *PhD, FASI, FRSC*

NATIONAL INSTITUTE FOR MEDICAL RESEARCH, 3 BARACK OBAMA DRIVE,

P.O. BOX 9653, 11101 DAR ES SALAAM, TANZANIA.

MOB:+255762377307 EMAIL: [hmalebo@nimr.or.tz](mailto:hmalebo@nimr.or.tz)

# WATER SUPPLY AND HANDWASHING FACILITIES

## WATER SUPPLY & PLUMBING SYSTEM

- 40% HCFs had water connected from source through plumbing system into buildings
- 60% of HCFs would have **to haul water from sources**
- 54% of HCFs have a plumbing system supplying water in the HCF building (Odds ratio of having piped connection = 2.0)
- **Facilities connected to tap water systems are two times more likely to have piped connection from source.**
- 46% of HCFs have no plumbing system and have **to haul water from sources by buckets and basins into consultation room, injection room and wards**

## HANDWASHING FACILITIES

- 73% had hand washing point at consultation room
- 75% had hand washing point at delivery room
  - **1 out of 4 facilities had no hand washing point at service point**
- **Type:** 49% in consultation room 35% labor room were hand wash basins
  - **Half of the HWF facilitates in consultation and two thirds in labor rooms were rudimental improvised 20 liters buckets or larger vessels**

# Plumbing System, Handwashing facilities and Supplies





# Health Care Facilities Cleanliness and Waste Management



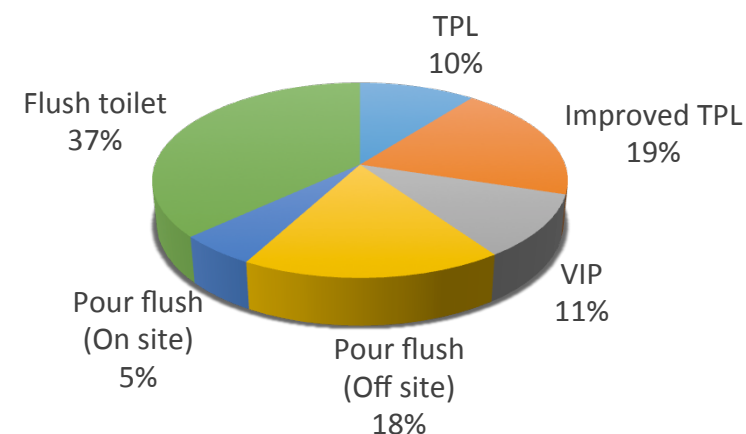


# Toilet/latrine facilities, state of repair and cleanliness

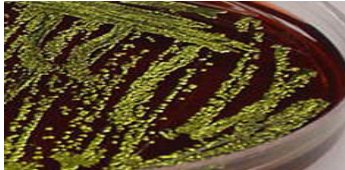


sanitary facilities at consultation and/or reception area

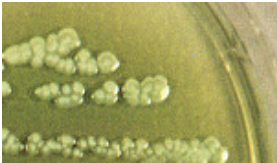
■ TPL ■ Improved TPL ■ VIP ■ Pour flush (Off site) ■ Pour flush (On site) ■ Flush toilet



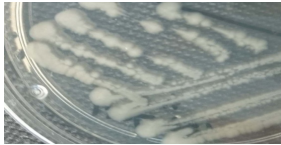
# Microbial contaminants in water samples, handwashes and air in health facilities



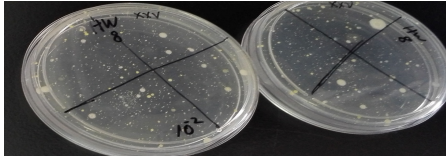
Greenish metallic sheen: *E. coli* colonies



Green pigmented colonies



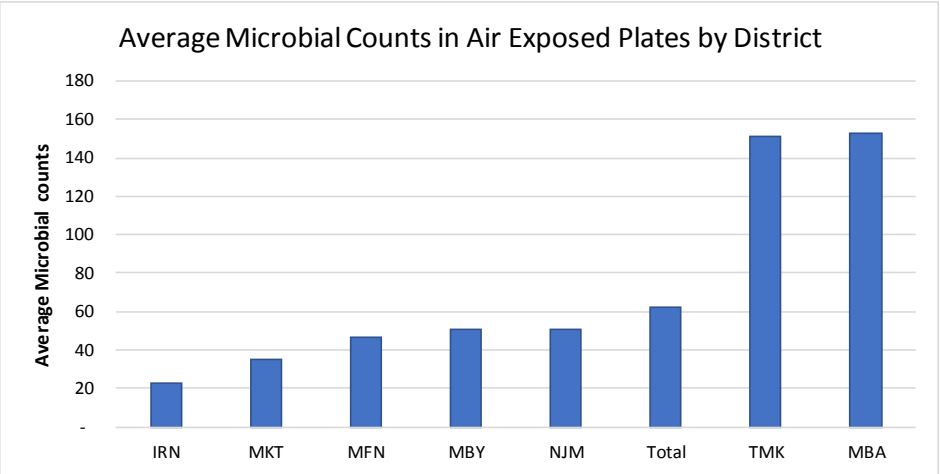
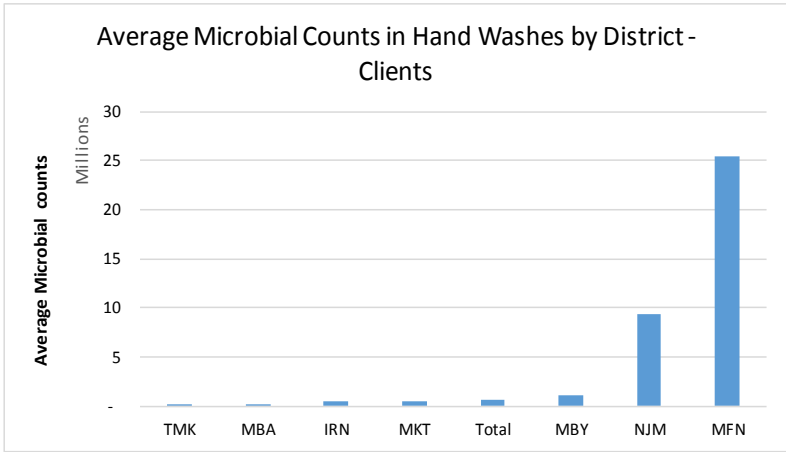
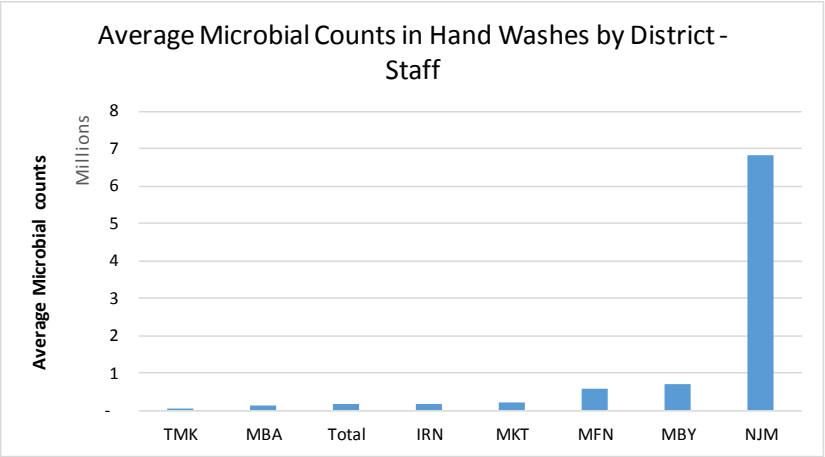
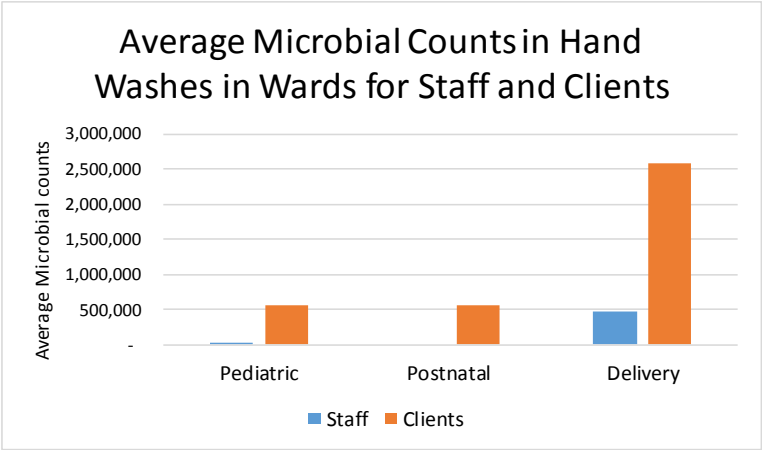
Mucoid colonies



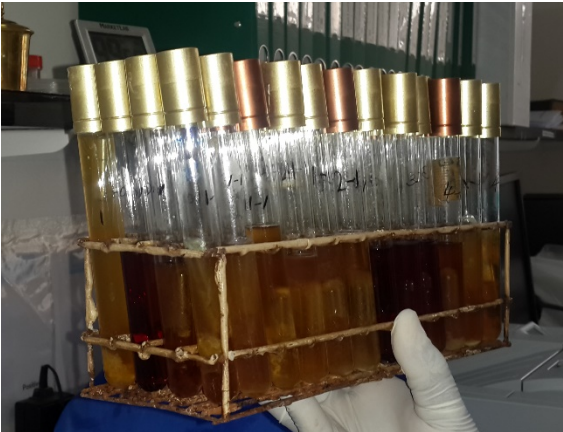
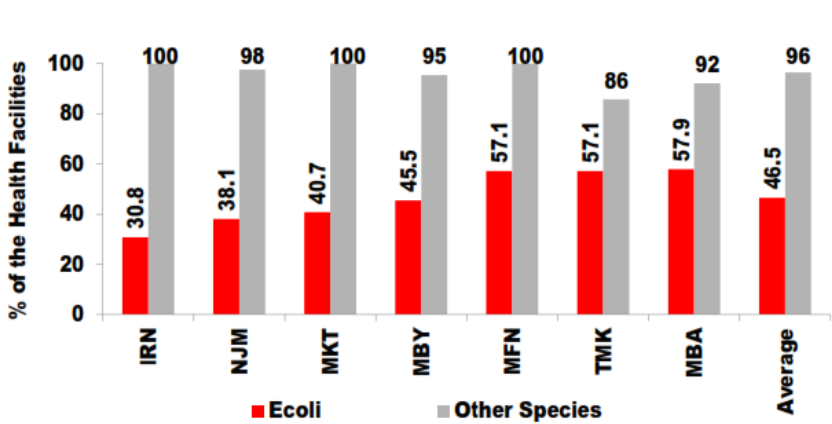
*A Photograph of plates showing different microbial strains*



*A gram -ve reaction (100X) of one pure isolates*



*% HCF with contaminated water: MPN results of the 7 districts*



# Acknowledgement

- UNICEF for funding this study
- MOWI
- MoHCDGEC
- LGAs
- UDSM
- MUHAS



# Thanks for Listening

