

Module 7. HAND HYGIENE

Ministry of Health Liberia
Division of Environmental & Occupational Health

WASH & EH Package – Early recovery & Resilience Building from EVD outbreak

This module is an adaptation from the Safe & Quality Health Services (SQS) Package, 2015



Objectives

- Explain the importance of hand hygiene
- Identify appropriate hand hygiene methods
- Demonstrate correct hand hygiene technique
- Understand when to use which product for hand hygiene



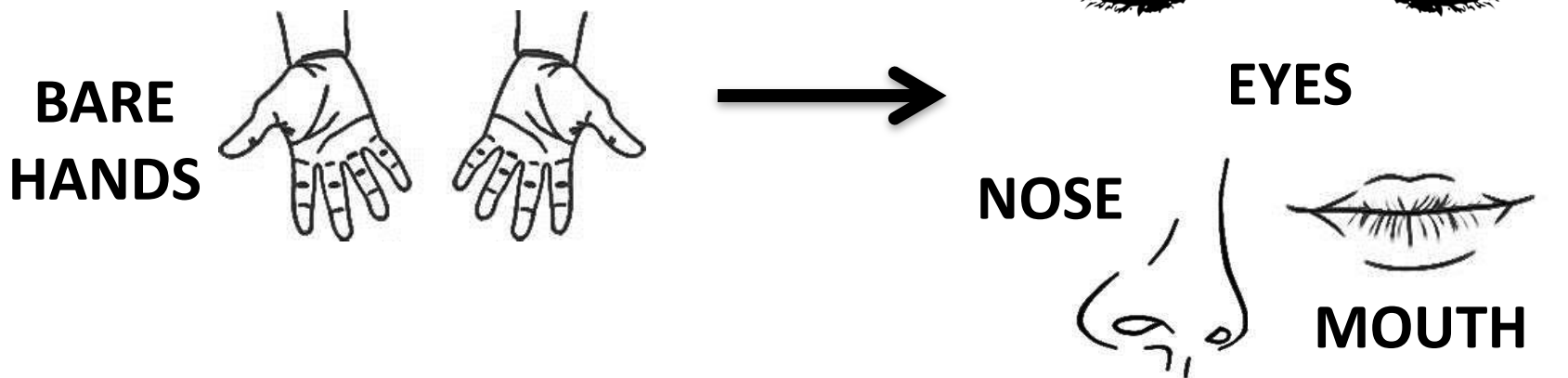
Hand Hygiene

- Best way to prevent the spread of germs in the healthcare setting and community
- Many HAIs are preventable by hand hygiene
- Protects you, your coworkers your patients and your family



Why do we do it?

- Hand hygiene prevents passing germs to ourselves and others



When do we need to do it?

Always wash hands before:

- Contact with a patient or their environment
- Clean and sterile procedures
- Putting on PPEs
- Eating

Always wash hands after:

- Contact with a patient or their environment
- Cleaning
- Taking off PPEs
- Touching patients' body fluids
- Visiting the toilet



Hand hygiene is essential to protect you when to perform hand hygiene in daily life?

Before , during and after preparing food

Before eating

After using the toilet

After touching garbage

After touching frequently touched surfaces

After touching an animal, animal feed or animal waste

Before and **after** treating your own cut or wound

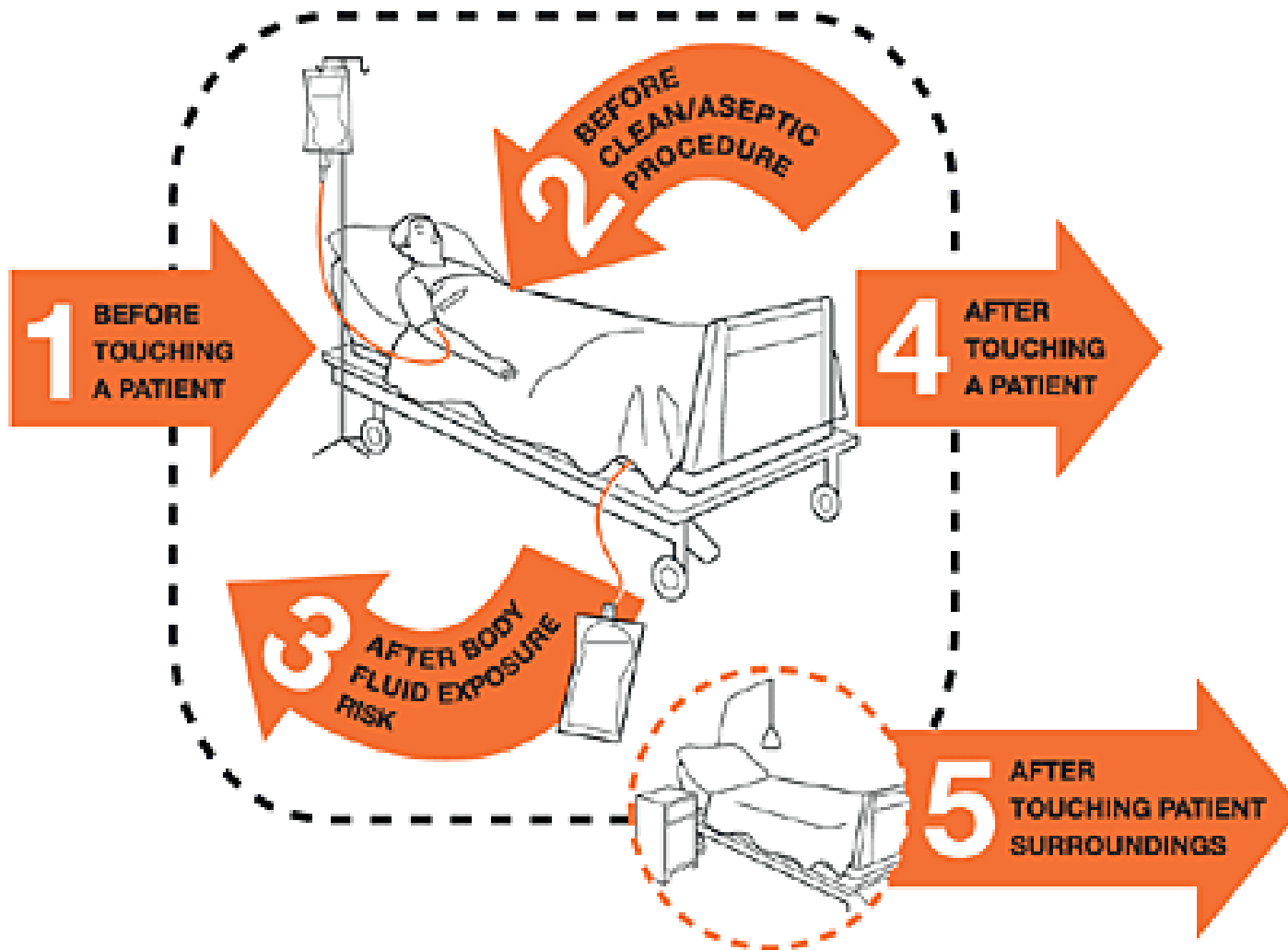
After blowing your nose, coughing

When in doubt

**Avoid touching your face (eyes, nose, mouth) before
performing hand hygiene and no nail biting**



WHO 5 Moments for Hand Hygiene



Methods of Hand Hygiene

- Cleaning: physically removing germs and dirt,
- Disinfection: chemically killing germs



**Washing hands with soap
and water**



**Rubbing hands with alcohol-
based hand rub**



Alcohol Based Hand Rub

- Preferred method for hand hygiene
- **Never use on hands that are visibly soiled**
- Minimum 60% alcohol concentration
- Rub for 20-30 seconds
- Common names: hand sanitizer, hand rub, hand gel, alcohol gel

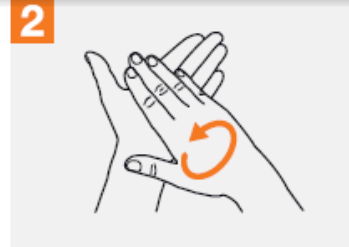


Hand Hygiene: Alcohol-based Hand Rub

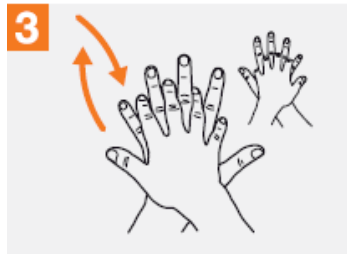
Duration of the entire procedure: **20-30 seconds**



Apply a palmful of the product in a cupped hand, covering all surfaces;



Rub hands palm to palm;



Right palm over left dorsum with interlaced fingers and vice versa;



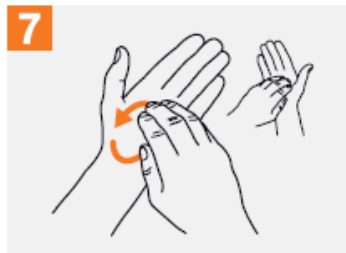
Palm to palm with fingers interlaced;



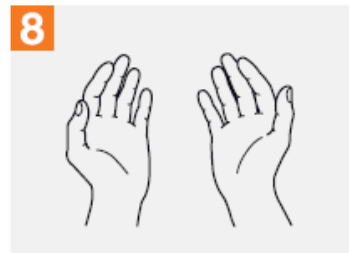
Backs of fingers to opposing palms with fingers interlocked;



Rotational rubbing of left thumb clasped in right palm and vice versa;



Rotational rubbing, backwards and forwards with clasped fingers of right hand in left palm and vice versa;



Once dry, your hands are safe.

Be sure to rub
both wrists

Rub for 20–30
seconds!



Soap and Water

- **Must be used when hands are visibly soiled**
- Need clean running water
- Use liquid soap OR bar soap
- If using bar soap, be sure its stored correctly for water to drain
- Ensure friction when cleaning hands
- Wash hands for 40-60 seconds



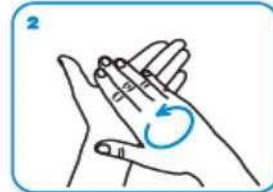
Hand Hygiene: Soap and Water



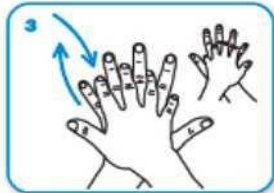
Wet hands with water



apply enough soap to cover all hand surfaces.



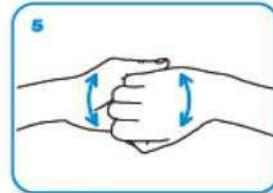
Rub hands palm to palm



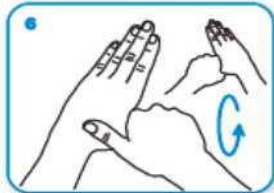
right palm over left dorsum with interlaced fingers and vice versa



palm to palm with fingers interlaced



backs of fingers to opposing palms with fingers interlocked



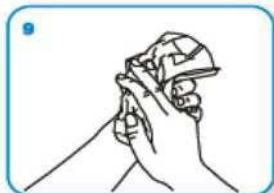
rotational rubbing of left thumb clasped in right palm and vice versa



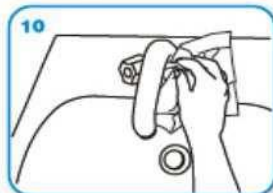
rotational rubbing, backwards and forwards with clasped fingers of right hand in left palm and vice versa.



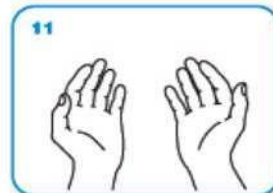
Rinse hands with water



dry thoroughly with a single use towel



use towel to turn off faucet



...and your hands are safe.

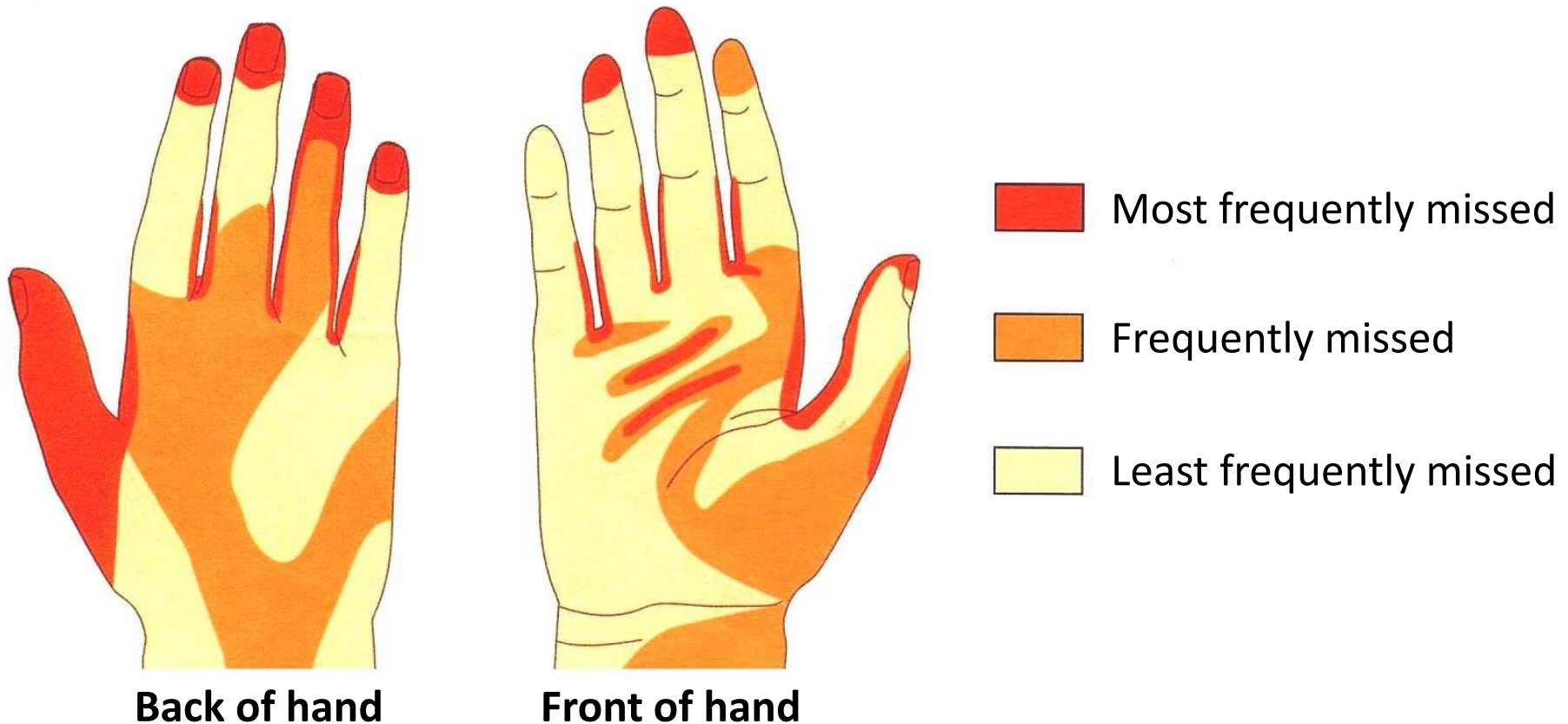
Be sure to rub both wrists

Wash hands for 40–60 seconds!



Hand Hygiene Technique

Parts of Hand Usually Missed



The use of gloves **does NOT** replace the need to perform hand hygiene. Hand hygiene must be performed after removing gloves



Placement of Hand Hygiene Stations

- Stations should be placed at all points of entry AND patient care areas to encourage frequent use by:
 - HCWs
 - Patients
 - Visitors



Questions?

