



**WASH**  
in Health Care Facilities

**Global Meeting on WASH in Health Care Facilities:**

**From Resolution to Revolution**

Livingstone, Zambia

9-11 September 2019

**unicef**  
for every child



# Partner commitments

- CDC
- World Bank (no slides)
- WaterAid
- World Vision
- Save the Children (no slides)
- One Drop
- IAPMO
- Health Care Without Harm
- Conrad N. Hilton Foundation

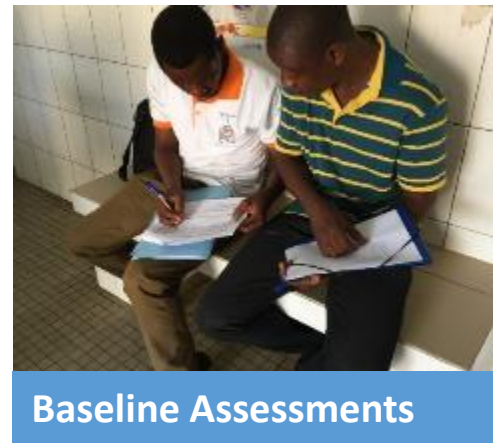
# U.S. Centers for Disease Control and Prevention (CDC)

- WASH in Health Care Facilities (HCFs) within framework:

- CDC's role: more

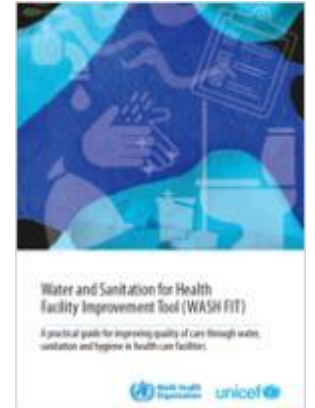


less



# U.S. Centers for Disease Control and Prevention (CDC)

- Also work at policy level: global, national, local
  - Build partner capacity
- Integrate WASH/IPC in HCFs into larger health initiatives:
  - Antimicrobial resistance (AMR)
    - CDC's AMR challenge
  - Global Health Security
    - WASH → IPC → AMR, patient safety, quality of care



Develop and  
Pilot WASH Fit



The findings and conclusions in this report are those of the authors and do not necessarily represent the official position of the Centers for Disease Control and Prevention



**WASH**  
in Health Care Facilities



unicef   
for every child



**Global Meeting on WASH in Health Care**

**From Resolution to Reality**

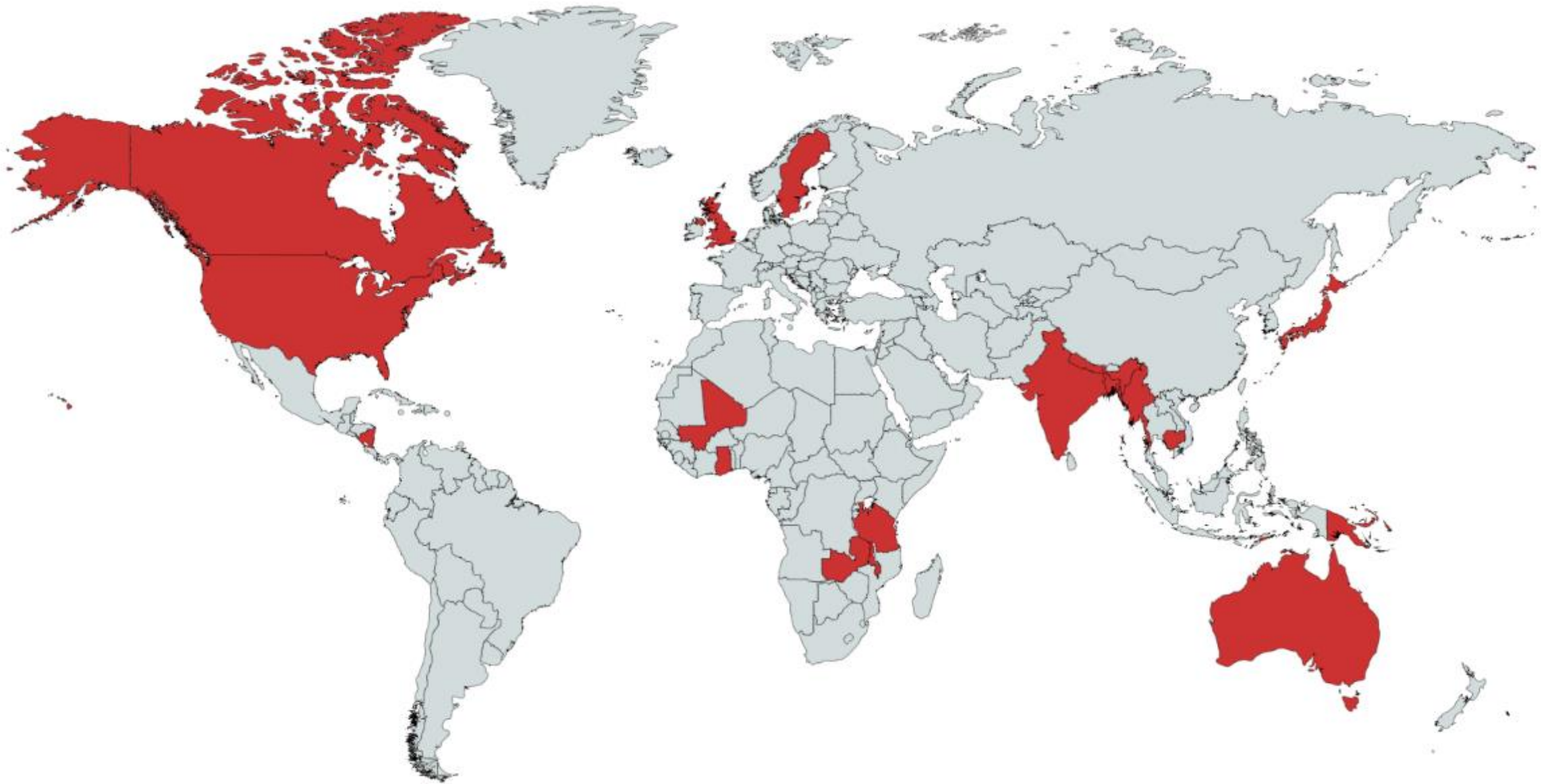
Livingstone, Zimbabwe

9-11 September

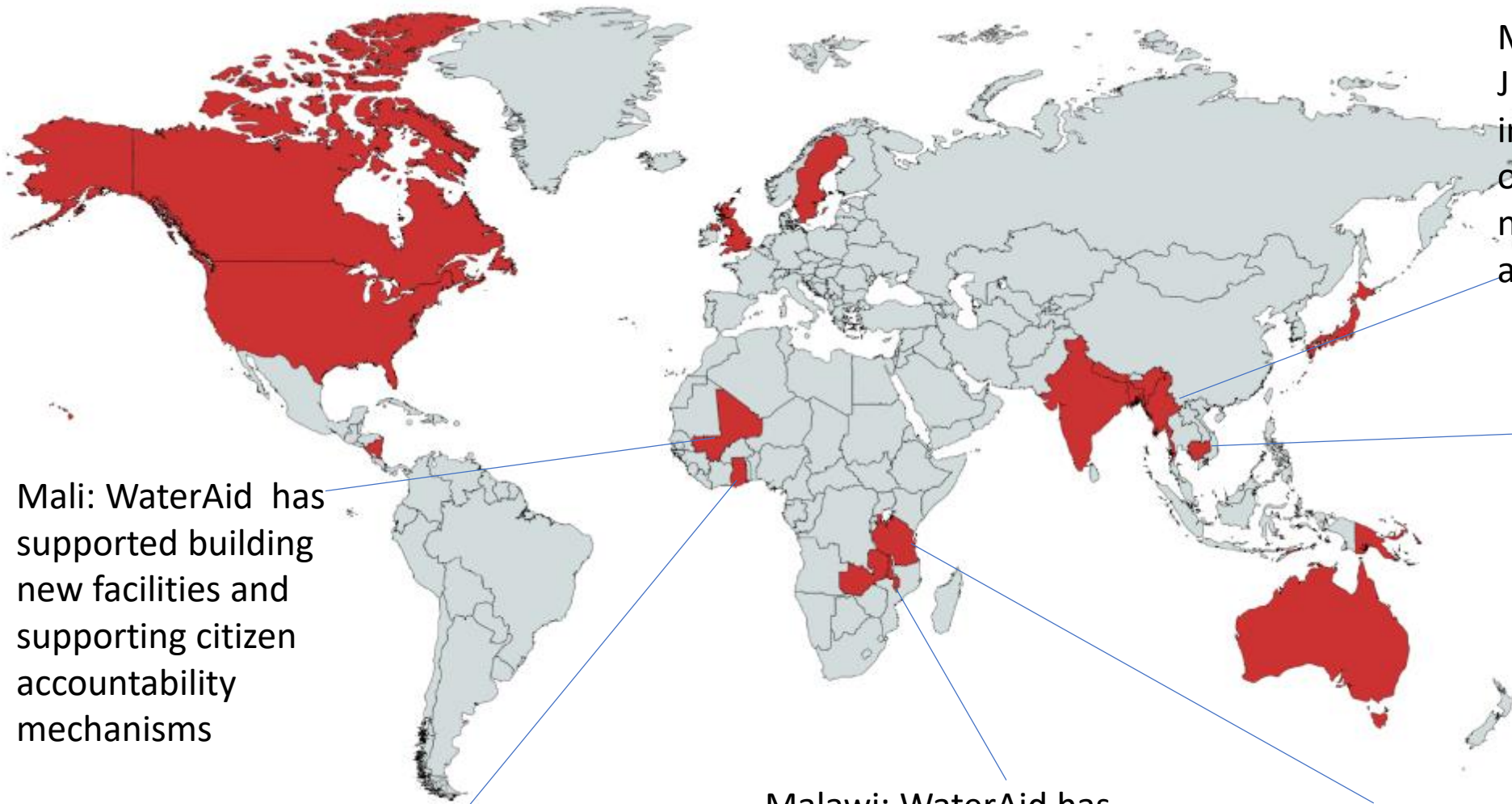
# World Bank

- |                                     |  |  |                                     |  |  |
|-------------------------------------|--|--|-------------------------------------|--|--|
| <input checked="" type="checkbox"/> |   | Advocacy, leadership and health sector engagement                    | <input checked="" type="checkbox"/> |   | Conduct situational analyses and assessment            |
| <input checked="" type="checkbox"/> |   | Develop and implement national standards and policies                | <input checked="" type="checkbox"/> |   | Empower and train staff (health workforce development) |
| <input type="checkbox"/>            |   | Financial contribution   | <input checked="" type="checkbox"/> |   | Improve and maintain infrastructure                    |
| <input checked="" type="checkbox"/> |   | Monitor & review data (track WASH through health systems monitoring) | <input checked="" type="checkbox"/> |   | Other  |
| <input checked="" type="checkbox"/> |  | Situational assessment and systems analyses                          | <input checked="" type="checkbox"/> |  | Use WASH FIT or other facility-based improvement tool  |

**WaterAid commit to supporting all the above ticked areas.  
Where we implement each one will depend on country  
context, priorities and needs**



**Each country highlighted is where we are actioning each of the commitment activities**



Mali: WaterAid has supported building new facilities and supporting citizen accountability mechanisms

Ghana: WaterAid collaborated with the Navorongo Health Research Centre to conduct facility assessments. The findings supported advocacy to the national and district government

Malawi: WaterAid has supported work on IPC, hygiene behaviour change and facility improvements such as solar-powered reticulated water supply system, inclusive bathrooms

Tanzania: WaterAid support the development and launch of the National Guidelines for Water, Sanitation and Hygiene in Healthcare Facilities.

Myanmar: Working with Jhpigo and the MoHS to integrate WASH within quality of care for maternal and neonatal care, with a gender and social inclusion focus

Cambodia: WaterAid advocated for inclusion of WASH in HCF in national quality mechanism, developed national guidelines and user friendly WASH tool. Undertaking hygiene behaviour change research





# Global Response to WASH in Health Care Facilities



# WASH services covering 40 HCFs in Mali

- Universal access to sustainable WASH services at HCF in Kolokani district (22 community health centers + 1 district health center.)
- 11 community health centers in Koro have full access to safe water through solar powered mechanized boreholes.
- 39 ASACOs (CBOs) trained on WASH FIT monitoring tool and management of WASH facilities including repair and maintenance.
- 93 Health personnel trained on WASH FIT monitoring tool
- 120 CVA group members trained on local advocacy and WASH in HCFs standards
- 101 Community Health agents trained and equipped for hygiene promotion and education



# Global Commitment

## Ensure clean and safe health care facilities

World Vision and its partners are committed to provide basic water, sanitation, and hygiene services.

- **Infrastructure Improvement:** 800 rural health care facilities
- **Population to be Served:** Estimated 7.2 million people
- **Financial Contribution:** \$100 million



# World Vision

## Global Commitment to WASH in HCF

- **Target timeframe:** 2019-2021
- **Key countries:** Ghana, Malawi, Mali, Niger, Rwanda, Tanzania, Uganda, Zambia, and Zimbabwe
- **Key partners:** Conrad N. Hilton Foundation, The Dornsife Family, Charity: water, CDC, Golf Fore Africa, Grundfos, Midmark Corporation, P&G, Robert and Laura Abernathy, University of North Carolina Chapel Hill, and Wells Bring Hope





**WASH**  
in Health Care Facilities



unicef   
for every child



**Global Meeting on WASH in Health Care**

**From Resolution to Reality**

Livingstone, Zimbabwe

9-11 September

# Save the Children

# One Drop Commitment to WASH in HCF

- ✓ One Drop, a donor agency committing to WASH in HCF
- ✓ \$8M in 4 country projects, 50 HCF
- ✓ Additional \$4M invested in Social Art for Behavior Change initiatives, ensuring the resilience of systems through the uptake of healthy behaviours
- ✓ Continue to scale up commitment



# Partner Commitment:



**Organization Name:** International Association of Plumbing and Mechanical Officials (IAPMO) / LIXIL Americas

**Commitment Areas:** Global/National/Local Advocacy

Investment & Funding  
Technical Support  
Implementation  
Research & Learning



**Geographies:** Global

**Summary of Commitment:** IAPMO and LIXIL Americas commits to work with other industry stakeholders in hosting a convening to develop a deeper understanding of the challenges faced by implementing organizations and an exploration of the role industry can play in accelerating the adoption of processes that benefit the construction, maintenance and implementation of WASH in these facilities. It will also serve to highlight the technical support, mentorship, product development and innovation and training initiatives that can result from partnerships between industry and the public sector. The collaborative also commits to carrying out a demonstration project facilitating the development of WASH services in a healthcare facility.



# Future Plans:



#COMMPLUMBING

- **Nov 2019:** Industry Roundtable (ID)
- **Nov 2019:** Design Week (ID)
- **May 2020:** Construction Week (ID)



- **2020–22:** WASH in HCF (ID / IN)



# Sustainable procurement

## Current/future: Sustainable Health in Procurement Project (SHiPP)



- Four year (2018-2021) joint project on sustainable procurement in the health sector.

**Goal:** Reducing harm to people and the environment caused by the manufacture and disposal of medical products and by the implementation of health programmes in developing countries.

### Programme objectives:

- Strengthen sustainable procurement in the UN system and in strategic countries
  - to leverage purchasing power and
  - drive policy and market demand for sustainable manufacturing and waste management in the health sector

### Participant countries:

Argentina, Brazil, China, India, Moldova, South Africa, Tanzania, Ukraine, Vietnam, Zambia and scaling up in SE Asia and Latin America



## Commitment: Sustainable health procurement in southern Africa

UNDP and HCWH's Sustainable Health in Procurement Project (SHiPP) is currently working in South Africa, Tanzania and Zambia with national and provincial health authorities to set standards and build capacity for the integration of sustainability criteria into the procurement of health products and services.

The **South African Development Community (SADC)** secretariat has requested the assistance of the project to contribute sustainability into the next revision of the pooled procurement policy and to build capacity among government procurement officers to understand the concepts and methods for sustainable procurement in health.

The standards will include the procurement of commodities for *waste management, treatment and disposal* applying the lessons learned from the procurement of materials required for waste segregation, occupational safety of health personnel and on-site treatment technologies.

# Global Green and Healthy Hospitals



## Current/future: GGHH network

- The Global Green and Healthy Hospitals community has more than 1,200 members in 60 countries who represent the interests of over 36,000 hospitals and health centers.
- 10 goal framework
  - Leadership, Waste, Chemicals, Energy, Water, Transportation, Food, Pharmaceuticals, Buildings, Purchasing
- Waste awards in Latin America
- Recognition of healthcare facilities making progress in safe and sustainable healthcare waste management

## Commitment: Green Health Challenge

- HCWH's **guidance document** and green health challenge on waste assists the health care facilities who participate in the challenge to measure progress on sustainable health-care waste management and reward good practices.
- HCWH will induct **30 new health care facilities in 10 countries** into the GGHH waste challenge and provide awards for those who reduce the total amount of waste generated, improve segregation of health care waste so that non-hazardous waste can be recycled and hazardous waste can be treated sustainably with non-burn treatment technologies.

# Healthcare waste management



World Health  
Organization



Empowered lives.  
Resilient nations.



Without Harm



## Current/future:

- Reducing UPOPs and mercury emissions from the healthcare sector in Africa (Ghana, Madagascar, Tanzania and Zambia)
  - Funded by GEF, implemented by UNDP, HCWH and WHO
  - Mercury free medical devices, autoclaving, recycling, biodigestion
  - Developing follow up strategies
- Health care waste strategy for Nepal
  - With GiZ, WHO Nepal, HealthCare Foundation Nepal
  - Implementation with HECAF and other partners
- Healthcare waste management in Cox's Bazar, Bangladesh
  - With WHO, Health Care Foundation Nepal
  - 3 million host population, 900,000 Rohingya refugees
- Training manual in development for India
- Support to HCFs via Global Green and Healthy Hospitals Network



## Commitment: Health care waste management training institute

- HCWH will **build capacity** for the sound management of health care waste through the development of a sustainable health care waste management institute building on and **leveraging existing partnerships** with WHO and UNDP and the existing Global Green and Healthy Hospitals network representing over 36,000 hospitals and health care facilities in 60 countries.
- The Institute will develop **200 trained trainers in ten countries** to conduct assessments of **waste management** systems using the rapid assessment tool developed by UNDP/WHO/HCWH for the GEF-funded model health care waste management and mercury elimination project to reduce unintentional Persistent Organic Pollutants (UPOPs) together with the **WHO WASH Fit** assessment and management tool.  
(subject to funding)

Between 2017 – 2021  
we will accelerate  
access to safe and  
affordable water  
services to  
households,  
healthcare facilities  
(HCF's), and schools  
in Burkina Faso,  
Ethiopia, Ghana, Mali,  
Niger, and Uganda.





## WHAT

## HOW

## WHY

ADVANCE  
SOLUTIONS



INNOVATION

QUALITY OF  
SERVICES

STRENGTHEN  
SYSTEMS



GOVERNANCE



COLLABORATION

SUSTAINABILITY  
OF SERVICES

BUILD  
EVIDENCE  
BASE



BEST PRACTICES

GALVANIZE  
FOCUS

IMPACT  
SDG 6

- \$13.5 million – improvements in 250 HCF's
- 14 District-based programs – demonstration sites in 6 countries.
- Applied research – rapid assessments, problem diagnose, test/incubate solutions and financing mechanisms.
- Development of a chlorine generator.



## SafiStation™ Chlorine Generator

- Continuous 1% chlorine solution production
- 3 liters per hour
- 100 g salt / liter H<sub>2</sub>O
- 110/220 or 12V
- Uses: Safe drinking water & disinfection in healthcare facilities