



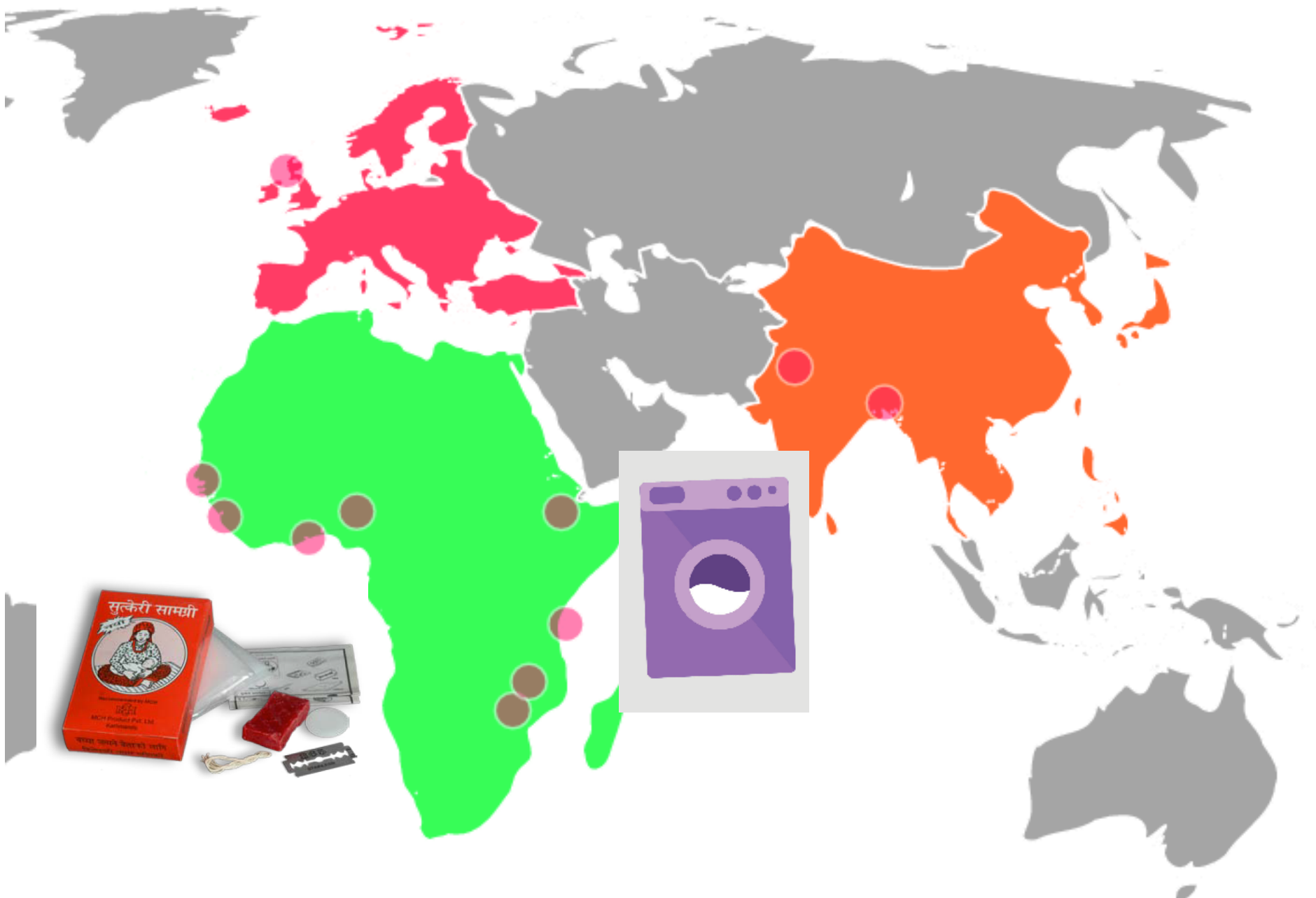
**Saving lives
with clean
safe care at
birth**

LONDON
SCHOOL of
HYGIENE
& TROPICAL
MEDICINE



www.soapboxcollaborative.org

Scottish Registered Charity SC043008



Tracking and improving environmental hygiene

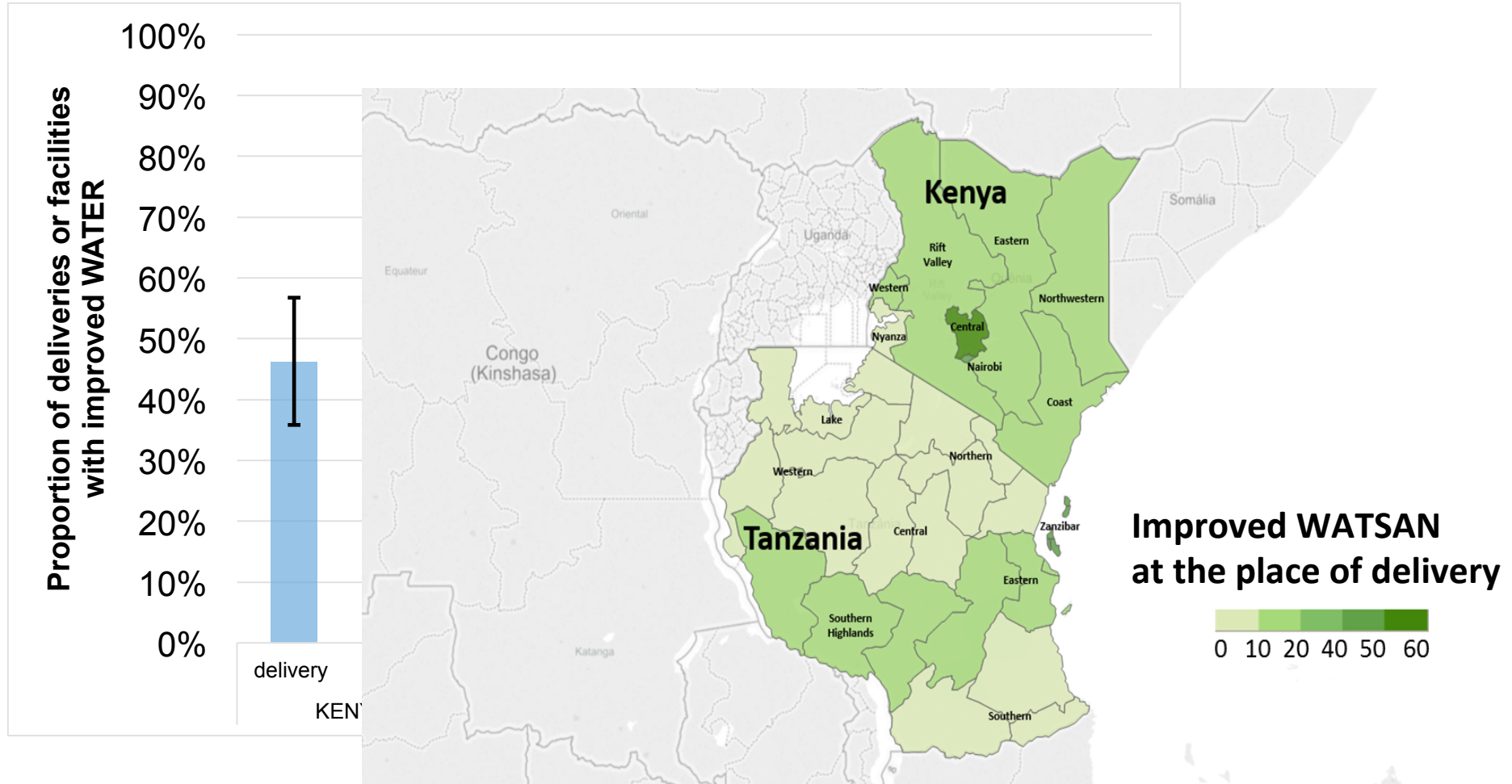
Presenter: Giorgia Gon

On behalf of the Soapbox team and in particular
Suzanne Cross, Emma Morrison and Wendy J Graham



Saving lives with clean, safe care at birth

Measuring – capitalizing on existing datasets



Saving lives with clean, safe care at birth

Measuring & improving – new data



'This exercise is an honour to our job...nobody wanted to know what we do and how pressurised with work we are. ...our work is undervalued both institutionally and socially'.
Cleaner, Dhaka Division, Bangladesh



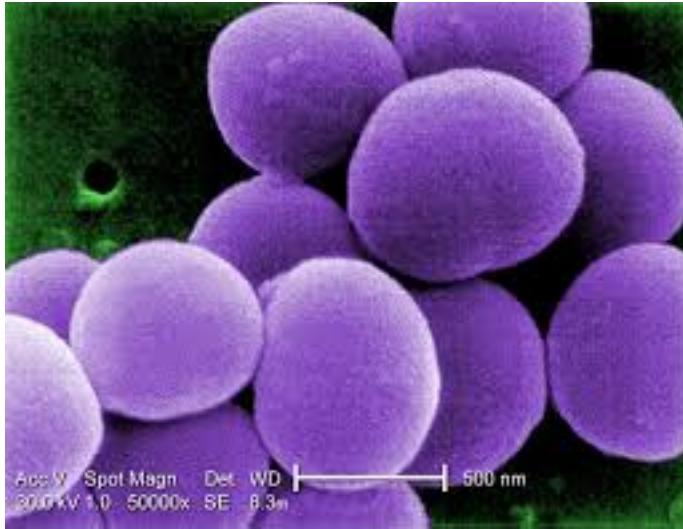
IMAGE EVIDENCE

Zanzibar, India, Bangladesh, Gambia



Saving lives with clean, safe care at birth

Measuring & improving - microbiology



Microbiology

- Currently no universally accepted risk-based standards to verify whether a hospital is truly clean and safe
- Assessing capacity to do this at local level
- Simple microbiology techniques
- Pilot of protocols in **Ethiopia** and **Gambia**

Improving - cleaning practices

Cleaners training manual for healthcare facilities

- Cleaners receive little or no formal training
- No international manuals
- Training material developed in collaboration with NHS Grampian (**practical, face to face, mechanisms**)
- Pilot due to start in the **Gambia**
- Evaluation of the pilot to be carried out by Soapbox during period April/May



Approaching behaviour change systematically

Social norms
Attitudes
Beliefs
Intention
Knowledge
Env. constraints
Etc.



BEHAVIOUR





**Thank
You!**

www.soapboxcollaborative.org

Scottish Registered Charity SC043008

Figure 1. Facility WATER and WATSAN indices

Improved WATER (SOURCE)	Piped (except public standpipe and piped from unprotected source) ¹ AND Source of water is on site (within 500m) AND No routine time of the year with a shortage of water	}	Improved WATER (FACILITY)	Improved water (SOURCE) AND Improved water (DELIVERY)
Improved WATER (DELIVERY)	Delivery room has running water, either piped or bucket with tap, observed (or reported) on the day of the survey			