

Taskforce on WASH in health care facilities: Insights from Facility Improvements



Insights #1 Discussion
Tuesday 06 July 2021

Agenda

Welcome from Chairs and meeting overview (10 min)

- Dr Maria Neira / Dr Anshu Banerjee
- Introduction of “Insights” series, Bruce Gordon

National scale-up of facility improvements-insights from countries (30)

- Global reflections, Arabella Hayter
- Addressing gender in Indonesia, Deviyanti Indah
- Embedding in national policy and AMR in Tajikistan, Safo Kalandarov
- Scaling up WASH FIT in Zimbabwe, Andrea Martinsen & Yuhei Hondo

Country respondents

- Scale up success and challenges in Liberia, Dr Jefferson Dahnlo
- Roadblocks to integration with quality in Malawi, Dr Holystone Kafanikhale

Update on global advocacy and policy efforts (7 min)

- Advocating and scaling up within UN System, Bud Rock
- Quick global updates on integration with health, Maggie Montgomery

Discussion (15 min)

Next steps and close (3 min)

Taskforce Insights Series

Taskforce purpose

- Reinforce calls for strong health leadership and govt accountability
- Learn, share and collectively address key bottlenecks

Taskforce insight roundtables-focused on addressing global WASH in HCF recommendations

- National scale-up with facility based improvements, July 2021
- Integrating into health sector planning, monitoring and programming, September 2021
- Securing budgets and financing, November 2021

Ongoing

- Various advocacy, policy and technical work of individual and groups of organizations
- WASH in HCF community events, knowledge sharing (e.g. WASH FIT “Meet Up”, revamped www.washinhcf.org)

Product

- Taskforce “Insights” paper - Q1 2022

Framework for facility improvements

What are the expected impacts of WASH FIT?

RESOURCE INPUTS¹

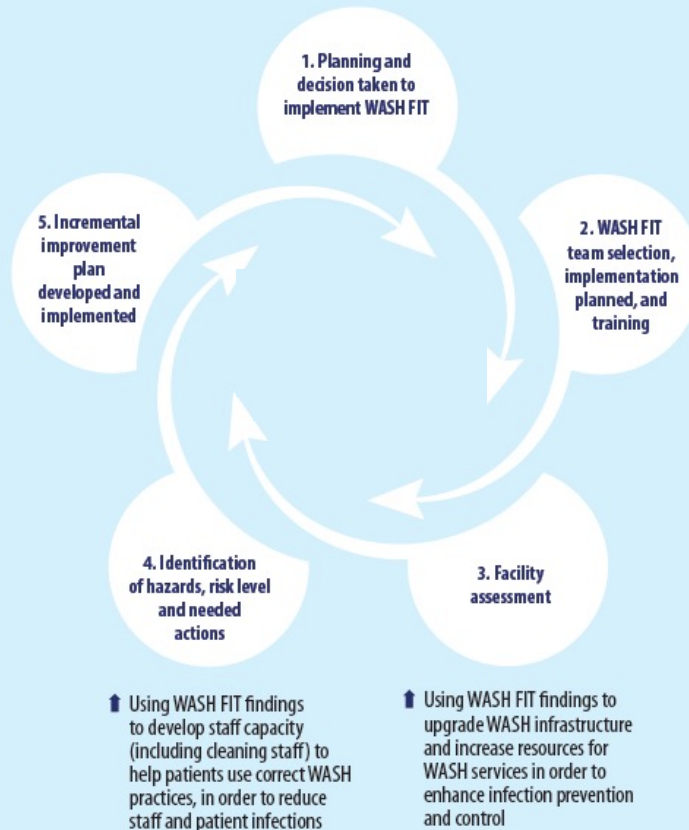
Political

Financial/material

Human

Community participation

National level preparation & implementation of practical steps²



OUTCOMES³



Improved infection prevention and control and reduced antimicrobial resistance



More efficient use of resources and lower health care costs



Improved staff morale and performance



Increased care seeking



Improved infrastructure and services

Quality, equity, dignity

IMMEDIATE AND LONG-TERM IMPACTS⁴



Dignified, safe pregnancy and delivery, and fewer preventable maternal and newborn deaths



Healthier, more productive families and communities



Improved outbreak response and resilience



¹ INPUTS: political, financial and material, human and community resources that go into conducting the WASH FIT assessment and developing and implementing a facility-based improvement plan.

Country implementation

40 countries and counting...

AFRO/EAPRO/WCARO: Burundi, Chad, Comoros, DRC, Ethiopia, Ghana, Guinea, Guinea-Bissau, Kenya, Liberia, Madagascar, Malawi, Mali, Mauritania, Mozambique, Niger, Rwanda, Sierra Leone, South Sudan, Tanzania, Togo, Zambia, Zimbabwe

SEARO/ROSA: Bhutan, India, Indonesia, Nepal, Maldives, Myanmar

WPRO/EAPRO: Cambodia, Lao PDR, Philippines, Viet Nam

PAHO/LACRO: Ecuador, Guatemala, Nicaragua, Peru, Venezuela

EMRO/MENARO: Iraq

EURO: Tajikistan



Insights for achieving national scale-up

- Secure buy-in of Ministry of Health, local government and communities before implementation
- Adapt indicators and approach to meet local context
- Embed in national and sub-national programmes, mentoring and monitoring (e.g., quality, IPC, child/maternal health)
- Regularly analyze, review and share data on improvements at sub-national and national level
- Support healthy competition within and between health care facilities
- Collective action: All partners supporting govt using same approach, designs,

Improving WASH FIT implementation and impact, V 2.0

WASH FIT Suite of Resources



What is WASH FIT?

Short introduction to WASH FIT

2 pages
5 minute read



Assessment tools

Assessment, hazard & risk analysis tools (support development & implementation of improvement plan & ongoing monitoring)

2 pages
5 minute read



Excel assessment tools
Sanitary assessment forms
Plan monitoring & feedback template



WASH FIT App
Digital tool containing all assessments

Training User Manual

All the materials for training in one place (slides, speaker notes, assessment & evaluation tools, sample agenda etc)

XX pages
30 minute read



Fact Sheets

5 factsheets

2 pages
1 minute reads



What's new?

- Streamline climate, energy and gender throughout
- Guide to support effective, modular and flexible training
- Improved data collection and progress monitoring tools
- Tracking implementation and results
- Supporting community of practice
- Case studies of pathways to national scale-up
- Review July/August, Finalize Q 1 2022



Scaling up WASH FIT in Tajikistan



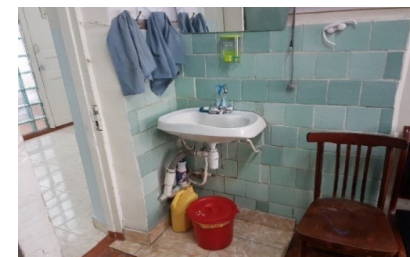
The way forward

6/07/2021

Safo Kalandarov, NPO, WHO Country Office in Tajikistan

Introduction of WASH FIT

- Round table organized by MoHSP with support of WHO, attended by key stakeholders and development partners (2017)
- Training of national WASH FIT Facilitators;
- Training of staff of a selected HCF (Shifobash)
- Pilot application and review of lessons learned



Progress in policy uptake



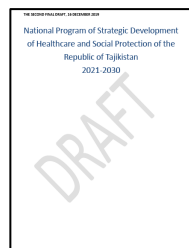
WASH is embedded in
AMR National Action Plan
(2018-2022)



Strategic objective 3: IPC through improvement of infection control, water supply, sanitation and hygiene measures in health care and other facilities



- Integrate AMR/WASH/IPC in quality of health care
- Develop and implement IPC/WASH policies and strategies in HCF
- **AMR/IPC, WASH programmes** in place in **each hospital setting** and long term care facilities



WASH in HCF is an integral component
of the National Health Strategy 2030
(to be adopted soon)



Objectives: (i) Strengthen the leadership and advocacy role of the MoHSP, within and beyond the health sector;
(ii) Ensure that every HCF has an adequate WASH, efficient cleaning and waste management systems



- Improve rules/standards on WASH in HCF
- **Improve WASH at national and facility level (WASHFIT)**
- Strengthen national monitoring and surveillance
- Ensuring appropriate financing
- Ensure effective coordination and partnerships

WASH FIT challenges

Main challenges

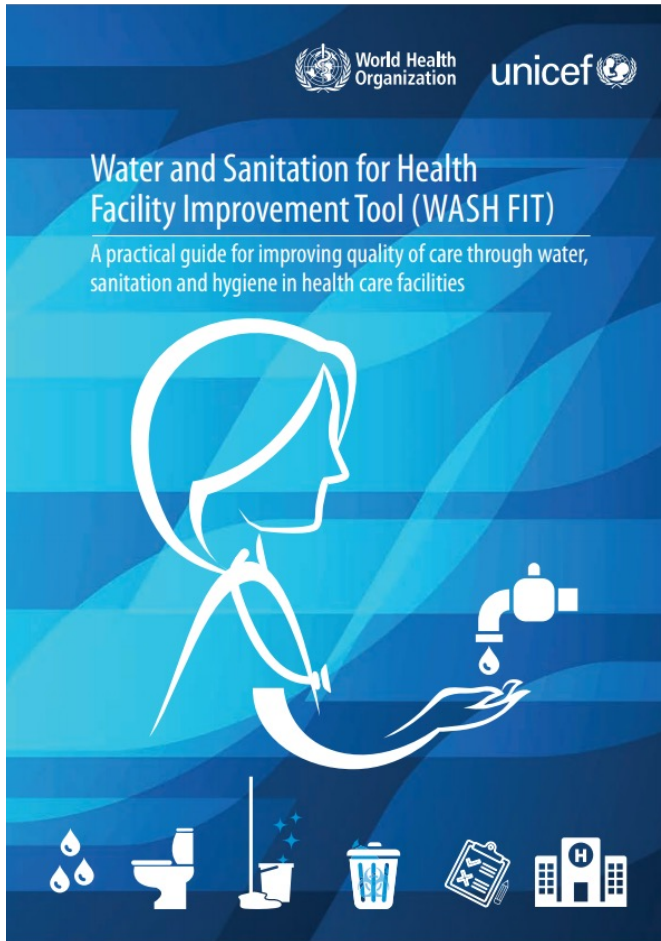
- Frequent changes of key staff within the Government and at the facility level
- Old infrastructure: its improvement is beyond WHO mandate and requires resources and improved partnerships
- Lack of specific budget line on WASH in HCF

Opportunities for scaling up

- Advocacy and capacity building at different levels
- Road map for scaling up WASHFIT
- MoHSP set up a Coordination Platform for WASH in HCF established in May 2021 to strengthen the coordinated planning, implementation and cooperation with development partners
- Engage stakeholders and improve buy-in of WASHFIT in projects and activities of partners (example of OXFAM)
- UNICEF large-scale project on WASH in HCF, funded by EC
- Tripartite project on AMR, included WASH/IPC



Thank you



CDC/UNICEF Collaboration on WASH FIT

Scale-up in
Zimbabwe

2020

- July – September
- 50 HCFs (Covid-19 isolation centers)
- Rapid assessment as part of Covid-19 response

2021

- Planned to be in July – September
- 100 HCFs (in Covid-19/cholera hotspots)
- National rollout (Central – Province – District – HCF)

Water, Sanitation and Hygiene (WASH) Assessment in 50 COVID-19 Treatment Centers in Zimbabwe: A Preliminary Report



unicef
for every child



ACTION
AGAINST
HUNGER

International
Medical Corps UK

ZCC
Zimbabwe Council of Churches

November 2020



International Journal of
*Environmental Research
and Public Health*

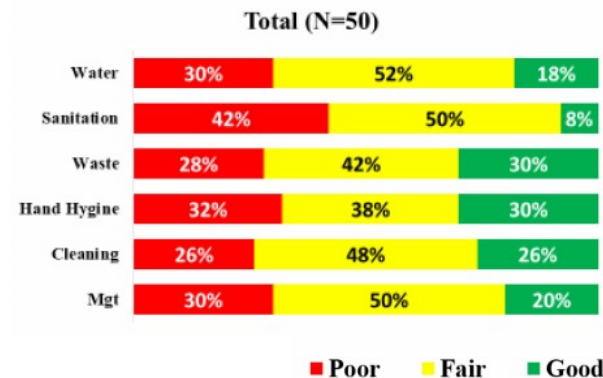


Article

Using the Water and Sanitation for Health Facility Improvement Tool (WASH FIT) in Zimbabwe: A Cross-Sectional Study of Water, Sanitation and Hygiene Services in 50 COVID-19 Isolation Facilities

Mitsuaki Hirai ^{1,*}, Victor Nyamandi ², Charles Siachema ², Nesbert Shirihuru ³, Lovemore Dhoba ³, Alison Baggen ⁴, Trevor Kanyowa ⁵, John Mwenda ², Lilian Dodzo ², Portia Manangazira ², Musiwarwo Chirume ², Marc Overmars ¹, Yuhei Honda ¹, Ajay Chouhan ¹, Boniface Nzara ¹, Placidia Vavirai ¹, Zvanaka Sithole ⁵, Paul Ngwakum ¹, Shelly Chitsungo ¹ and Aidan A. Cronin ⁶

May 2021



Enabling factors?

- Joint monitoring by government, NGOs and UNICEF
- Knowledge production by government, NGOs, WHO and UNICEF
- National WASH in HCF taskforce
- COVID-19

Potential challenges

- Sustainable data collection
- Resources to translate findings into actual change

Integration with and influencing global health efforts

- Recent or upcoming events with WASH in HCF session or messaging
 - Global Midwifery congress (June 2021)
 - Primary Health Care Training (June 2021)
 - International Society for Quality in Health Care (ISQua) (July 2021)
 - Stockholm World Water Week (focus on climate resilience) (August 2021)
 - Global Patient Safety Day (Sept 2021)
 - Antimicrobial Awareness Week (Nov 2021)
- Internal advocacy and influencing
 - WHO Quality Taskforce and WASH in HCF “deep dive”
- Is there a big omission in this list? What groups/focus areas should be prioritized?
- How can engagement in these events and with these groups help unlock identified bottlenecks?
- What resources (technical, financial, political) can we offer?