

# DELIVERING QUALITY, PEOPLE-CENTRED HEALTH CARE FOR ALL

The role of water, sanitation and hygiene in achieving quality universal health coverage

## VISIONS

### WASH in health care facilities

To ensure that every health care facility, in every setting, has safely managed, reliable water, sanitation and hygiene facilities and practices to meet staff and patient needs in order to provide quality, safe people-centred care.

### Quality Universal Health Coverage

Quality is recognized as a fundamental precondition to effective health service delivery in low and middle income countries working towards Universal Health Coverage.

## CURRENT SITUATION

### Coverage of WASH in health care facilities



**38%**  
do not have ANY water source



**19%**  
do not have improved sanitation



**35%**  
do not have water and soap for handwashing

**WASH IMPROVEMENTS**  
Increase demand and gain trust in service delivery

### Implications on health service delivery



### Shared goal

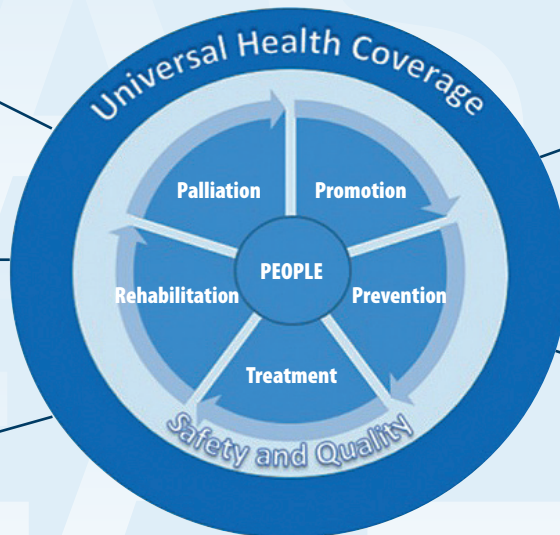
To ensure that increasing demand and use of services is met with quality service provision, **WASH services and hygiene practices in health care facilities must improve.**

## WASH IN HEALTH CARE FACILITIES (HCF) UNDERPINS SAFE AND QUALITY SERVICE PROVISION FOR ACHIEVING UNIVERSAL HEALTH COVERAGE

WASH in health care facility standards should be established and enforced, placing people at the centre, to improve quality of care.

Cost of WASH upgrades and maintenance should be included in national health and facility level budgets. Savings will result from efficiency improvements and reduction of health care associated infections.

WASH indicators included in national health monitoring systems to track progress, guide investments and improve people-centred quality.



WASH in health care facilities improves staff morale and infection prevention and control culture for all people accessing services.

Adequate and resilient WASH services in health care facilities are essential for outbreak prevention, preparedness and control (e.g. Cholera, Ebola).

## JOINT ACTIONS

**Combine advocacy efforts** to reach global WASH and quality UHC goals

Include WASH in health care facilities as a **tracer indicator** for quality UHC

**Cross fertilize** WASH in HCF global action plan with UHC activities

**Align national processes** on standards development and implementation with financing for UHC

**Jointly implement and document** lessons learned from improving WASH and quality of care in health facilities

**Universal Health Coverage (UHC)**, is defined as ensuring that all people can use promotive, preventive, curative, rehabilitative and palliative health services they need, of sufficient quality to be effective, while also ensuring that the use of these services does not expose the user to financial hardship.