



Global Framework for Action on WASH and electricity in health care facilities:

Virtual Roundtable Consultation



Today's agenda

- Welcome and moderation (Bruce Gordon) (2 min)
- Setting the scene - joined up WASH and health actions (Ann Thomas) (5 min)
- Overview of Framework and Implementation (Maggie Montgomery) (10 min)
- Facilitated discussion (Bruce Gordon) (30 min)
- Closing remarks (Bruce Gordon) (5 min)



A new phase needs a new plan

- May 2023: last report back to WHA on the 2019 Resolution
- June 2023: Global progress report and Global Summit outlines needed actions
- Q4 2023: new UN General Assembly Resolution - continued and expanded UN and Member State engagement and accountability
- A new Global Framework for Action for the next phase to creatively and strategically plan and execute amidst growing threats of climate change, conflict and outbreaks
- The revolution is not over...



World Health Assembly 2019

The Global Framework for Action builds upon the three main recommendations in the Global progress report

1

Integrate WASH, waste and electricity services into health planning, programming, financing and monitoring at all levels.

*Include in global health strategy monitoring and procurement;
Joint sector review and planning*

2

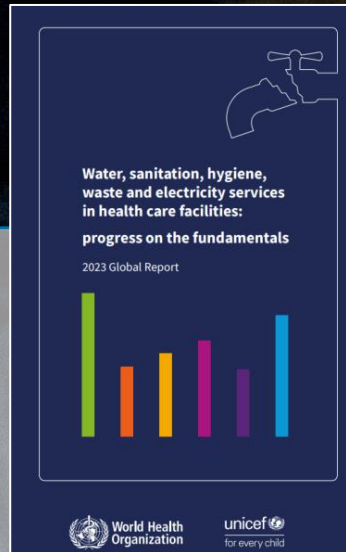
Regularly monitor and review progress and strengthen accountability.

*UN General Assembly Resolution;
Monitoring and review within health systems monitoring*

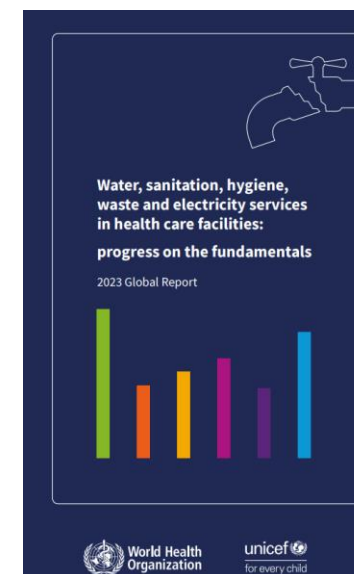
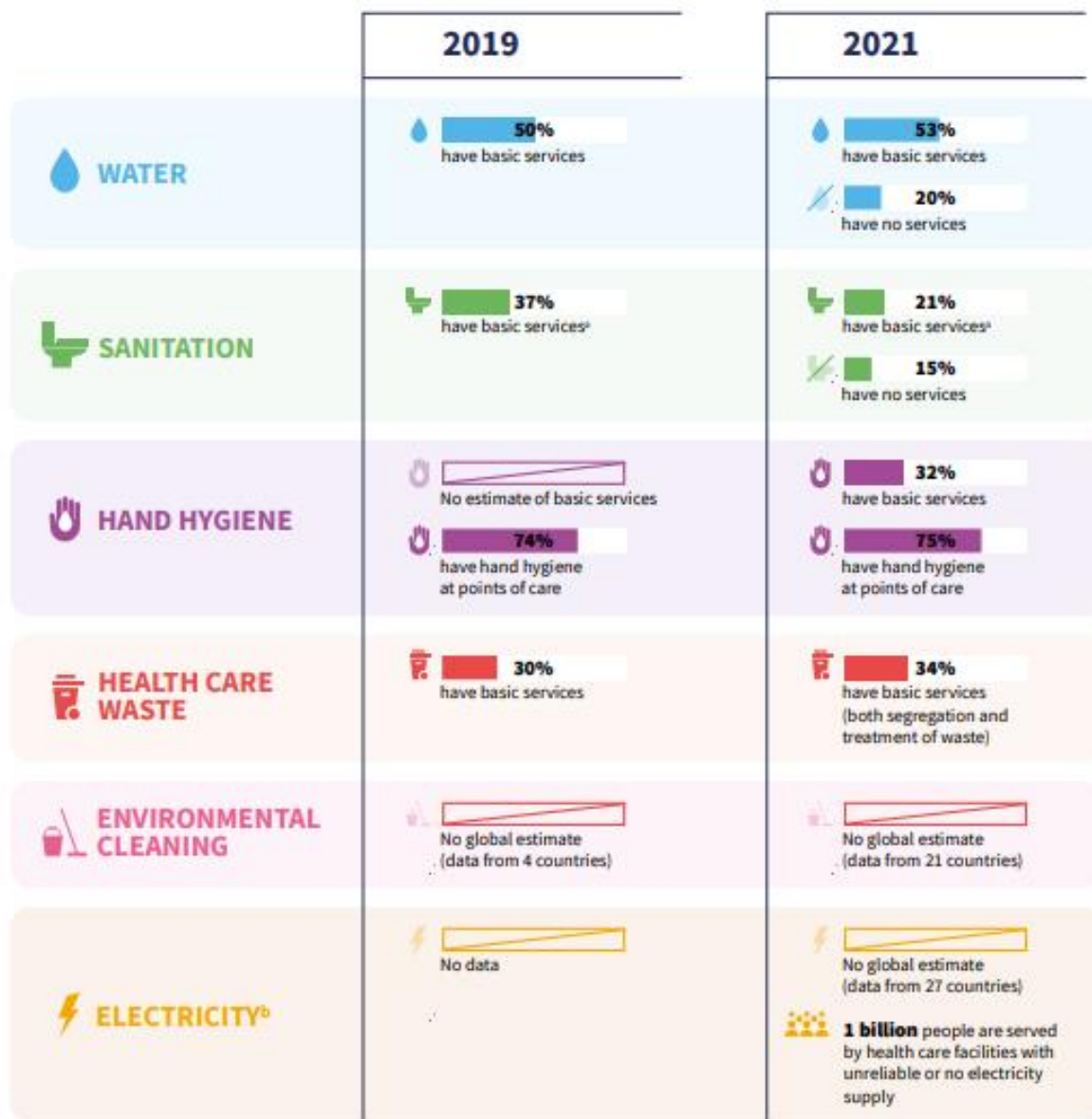
3

Develop and empower the health workforce to deliver and maintain WASH, waste and electricity services, and practice good hygiene.

*Develop cadre of WASH, waste and electricity workforce;
Clear job descriptions, responsibility and compensation*



Globally, we still have A LOT to do to address gaps



Global Summit on WASH and electricity in health care facilities (June 2023) informed Framework

- 35 countries; 125 participants, including Ukraine
- **3 main outcomes:** Draft global framework, focused technical areas of effort, renewed WASH/Health commitments
- **Country highlights included:**
 - National assessments important for engaging leaders and igniting action
 - Emergencies provide an opportunity to fix “old problems”, strengthen systems
 - Several health platforms exist for integration: maternal/child health, PHC, AMR, IPC
 - Climate smart health care facility interventions are “no regrets” investments

Download the Summit Report here:

<https://www.washinhcf.org/resource/global-summit-meeting-report-amman-jordan/>



Aims

- Accelerate implementation of universal WASH, waste and electricity services in health care facilities
- Facilitate a universal and collaborative platform for monitoring, accountability, coordination and increased understanding of the situation, challenges, and effective strategies
- Increase political commitment and leadership engagement through policy directives, advocacy integration with key health and climate initiatives
- Accelerate effective implementation through support for costed, national plans, infrastructure improvements and by promoting health workforce development
- Increase effectiveness and sustainability of country and partner investments.



Key focus areas

- **Costed, resourced national plans:** Global partners to support development, resourcing and implementation of realistic, costed national roadmaps in line with broader health financing and programming efforts
- **Integration:** Integrate WASH, waste and electricity services into health planning, programming, financing and monitoring at all levels
- **Measurement & accountability:** Regularly monitor, document and review progress in meeting targets at the local, national, regional and global level; where targets not met, increase political and technical action to accelerate efforts
- **Health workforce:** Develop and empower sufficient and auxiliary health workforce to deliver and maintain WASH, waste and electricity services, and practise good hygiene
- **Climate resilient and low-carbon health care facilities:** Strengthen policies, standards and interventions aligned with climate resilient, low-carbon and sustainable health care facilities and health systems



National action targets

Action	Baseline (2020)	2022	Target 2026	Target 2030
1.1 Establish baseline	75%	92%	-All countries have set baselines using harmonised global indicators/	-All countries regularly update status of baseline (every 5 years).
1.2 Update national WASH and waste standards	52%	53% ¹⁶	-All countries have standards which reflect latest evidence and address climate resilience ¹⁷ , low-carbon and sustainable services/health care facilities.	-Updated standards are actively disseminated, implemented, regulated and monitored.
1.3 Develop and implement costed roadmap	N/D	63%	-All countries have developed and are working to resource and implement costed roadmaps with targets.	-All countries are implementing costed roadmaps with regular, dedicated resourcing.
1.4 Monitor WASH, waste and electricity in health care systems	10%	14% ¹⁸	-Half of countries have WASH, waste, and electricity indicators in health monitoring information systems (HMIS).	-All countries regularly review and disseminate and use WASH, waste and electricity data in HMIS to inform policy and budgeting decisions.
1.5 Secure sufficient financing of services	11%	12%	-Health care facilities in one third of countries have included regular and sufficient funding for WASH, waste, and electricity; budget accountability supporting through regular monitoring and reporting.	-Health care facilities in all countries have included regular and sufficient funding for WASH, waste and electricity; budget accountability supported through regular monitoring and reporting.

Service levels, climate and health targets

2. Service Levels¹⁹	2.1 Increase services in middle income (MIC) and high-income countries (HIC) globally	Water: 76% Sanitation: ND Hand Hygiene: ND Waste: ND Electricity: ND	Water: 78% Sanitation: ND Hand Hygiene: 51% Waste: ND Electricity: 1 billion people served by health-care facilities with unreliable or no electricity	-All HIC and MIC have universal basic services and national standards and monitoring indicators exist for higher levels of service.	-All HIC and MIC have universal basic and higher levels of service. All health-care facilities have access to reliable electricity.
	2.2 Increase services in least developed countries (LDCs)	Water: 50% Sanitation: 37% Hand Hygiene: ND Waste: 30% Electricity: ND	Water: 53% Sanitation: 21% Hand Hygiene: 32% Waste: 34% Electricity: ND	- 60% of health care facilities have basic services.	-In LDCs, 100% of facilities have basic WASH services and 50% have higher levels of service. - All health care facilities have access to reliable electricity.
3.Climate resilience and sustainability	3.1 Improve climate resilience and sustainability of services	ND	83% countries have plans that address climate resilience of WASH, waste and electricity technologies and systems in health care facilities ²⁰	-100% of countries have plans that address climate resilience of WASH technologies and systems in health care facilities.	-100% of countries have plans that address climate resilience of WASH, waste and electricity technologies and systems in health care facilities, and these plans are resourced and implemented.
4. Health engagement	4.1 Integrate into health policies, programming, and monitoring	-WASH, waste and electricity indicators included in Quality of Care Standards for Mothers, Newborns and Children;	-WASH, waste and electricity indicators and monitoring included in PHC framework, IPC Global Strategy, Quality of Care Strategies, health facility and workforce strategies	-WASH, waste and electricity indicators and data included in monitoring of global health plans, including those on Patient Safety, Infection Prevention and Control, Pandemic Preparedness and Child/Maternal Health. -50% of countries have WASH, waste and electricity targets for health care facilities, which are integrated into national health policies and monitoring. -All major health meetings will consider planning for and/or financing of WASH, waste and electricity services.	-All countries regularly monitor WASH, waste and electricity services, and report on and budget for services within national health policies that aim to achieve UHC through a PHC-oriented approach.

Country	Step 1		Step 2	Step 3		Step 4	Step 5	Step 6	Step 7
	1a. Conduct situational analysis	1b. Conduct (baseline) assessment	Set targets and establish coordination mechanism	1a. Establish national WASH standards	1b. Establish national health care waste standards	Improve and maintain infrastructure			
Angola	2	2	1	1	4	1	ND	2	
Bangladesh	4	4	4	3	3	4	3	3	
Benin	1	4	2	2	2	1	4	ND	1
Bhutan	3	4	3	3	3	3	3	3	3
Bolivia	4	3	4	3	3	1	1	ND	ND
Brazil	4	3	2	ND	ND	3	3	2	3
Burkina Faso	2	4	3	3	4	3	1	ND	ND
Cambodia	4	3	4	4	4	4	2	ND	ND
Cameroon	3	3	ND	ND	ND	ND	ND	ND	ND
Chad	2	1	1	1	3	1	2	2	3
Colombia	2	3	2	4	ND	1	1	2	ND
Democratic Republic of the Congo	2	3	4	4	3	4	3	ND	ND
Equatorial Guinea	3	4	3	3	3	2	1	1	1
Eswatini	2	4	3	3	4	3	2	3	3
Ethiopia	4	4	4	4	4	3	3	3	3
Gabon	4	2	ND	3	3	1	4	ND	ND
Gambia	1	2	1	4	4	1	1	ND	ND
Ghana	4	4	3	4	4	4	4	4	4
Guatemala	4	3	3	3	4	1	1	2	2
Guinea	ND	2	3	1	4	3	1	ND	4
Guinea-Bissau	4	4	3	2	2	3	4	2	
Honduras	4	3	3	3	4	1	1	ND	
Hungary	4	4	3	4	4	3	3	4	
India	3	2	3	4	4	4	3	NT	

Monitoring mechanisms

WASH and waste service levels → WHO/UNICEF Joint Monitoring Programme → 2024

National actions (Practical Steps) → Country tracker → 2025

Financing → GLAAS → 2025

Indicators also embedded in

- Global Action Plan on Infection Prevention and Control
- Primary Health Care Monitoring Framework

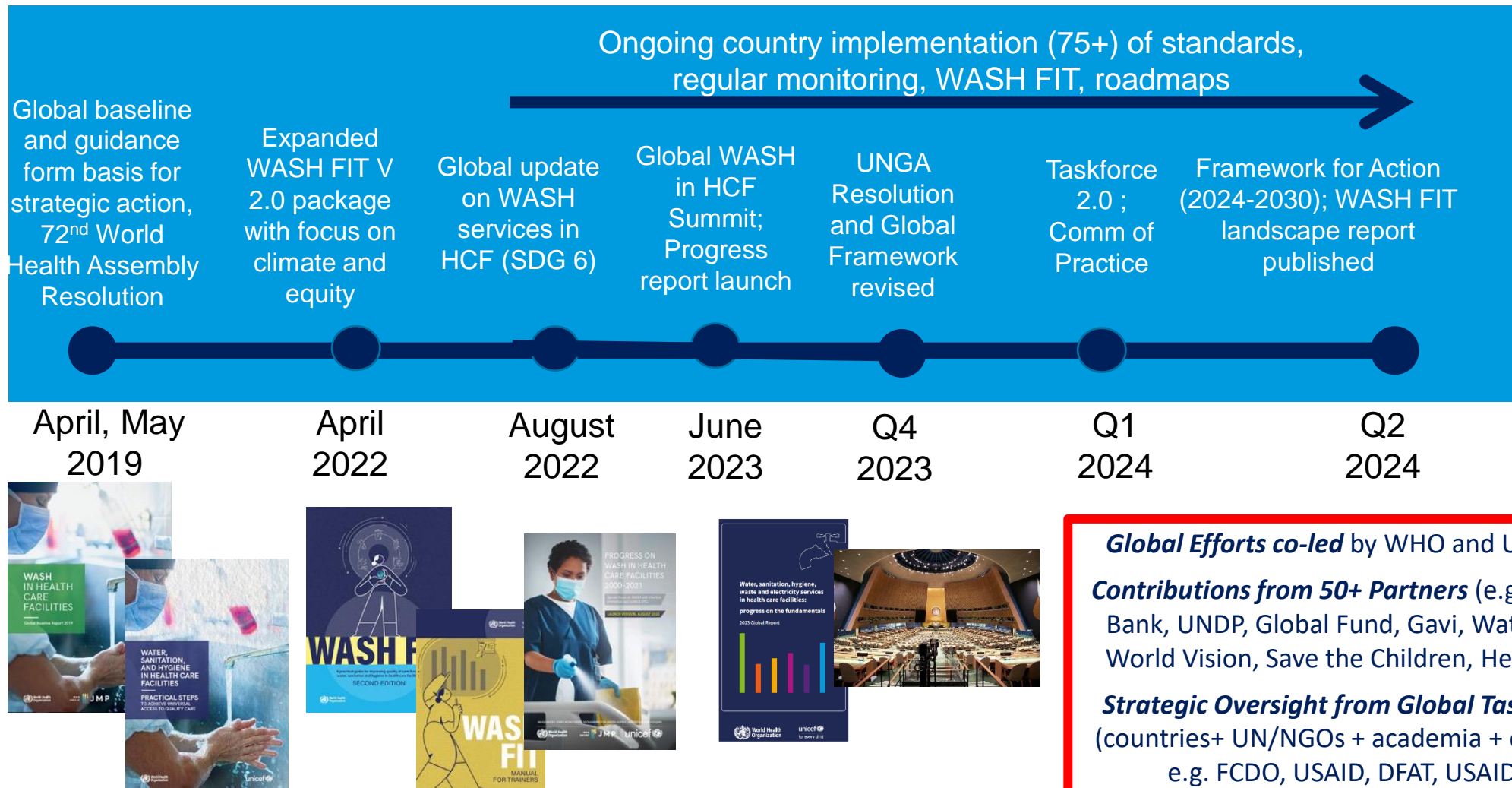


Linkages to new UN General Assembly Resolution

- “Sustainable, safe and universal water, sanitation, hygiene waste and electricity services in health care facilities”
- Draws upon commitments made in declaration on human rights, financing for development, UHC, AMR, pandemic preparedness
- Encourages Member States to update standards, engage in cross sectoral efforts (e.g. joint sector reviews), WASH in health monitoring, ensure adequate budgets and support the health workforce
- Commits WHO/UNICEF to regular (every 2 years) reporting to UN General Assembly
- Currently under consultation; likely adoption Nov/Dec 2023

Building on the past, looking ahead

Aim: Every person has quality, essential health care



Suggested improvements from reviewers

- Feedback from 20+ individuals/organizations
- Need better framing of waste (framework now refers to WASH, waste and electricity)
- Limited attention to electricity throughout (limited data, tools, dedicated national actions)
- Missing examples of any success stories – has no progress happened?
- Include a “demand-side” component to monitoring and accountability.
- How to capture the issue of government leadership?
- Integration with health: monitoring is well captured in indicators, but policy and programming is lacking
- Request for guidance for WHO/UNICEF COs to operationalize framework (and avoid duplication) at country level

Proposed objectives of Taskforce 2.0

- Provide external strategic review of global and national activities, including review of progress against targets in the Global Framework for Action and UN General Assembly Resolution
- Share and synthesize among members new innovative and effective strategies for increasing and sustaining services
- Targeted advocacy to drive increased financing and implementation of the Global Framework for Action

Draft global workplan and options for Taskforce 2.0 engagement

Area	Link to Global Recommendations	Activity	Output	Taskforce Role
Global coordination and leadership	1. Integrate at all levels	-Develop and disseminate Global Plan of Action	-Final Global Plan of Action (2024-2030)	-WG to conduct consultations and support Global Plan update and dissemination -WG on financing and securing additional <u>public+private</u> resources
Monitoring	2. Regularly monitor and review progress	-JMP monitoring -Country tracker update and monitoring	-JMP report (2024) -Global progress report (+ tracker data) (2025)	-Support interpretation and dissemination
Country support and capacity building	3. Empower health workforce	-Review of WASH FIT use, implementation and impact -Update of WASH FIT training package -Support for costed roadmaps and implementation	-Global report on use of WASH FIT and recommendations for scale-up and embedding and health <u>programmes</u>	-Engage <u>programmes</u> in trainings/use of tools/addressing bottlenecks -Support costing/financing efforts
Global and regional events	1.Integrate at all levels	-UHC or PHC HL Event -COP 29 (2024)		-Organize sessions; conduct outreach

Thank you. Asante sana. Merci beaucoup. Shkran
lak. Dyakuyu. Gracias. Salamat.



Discussion

- **Content and measurement**
 - What is missing or needs to be revised?
 - How can progress in implementing be best shared and articulated?
- **Implementation**
 - What will you/your organization do to support implementation?
 - What additional technical and financial support is needed?

